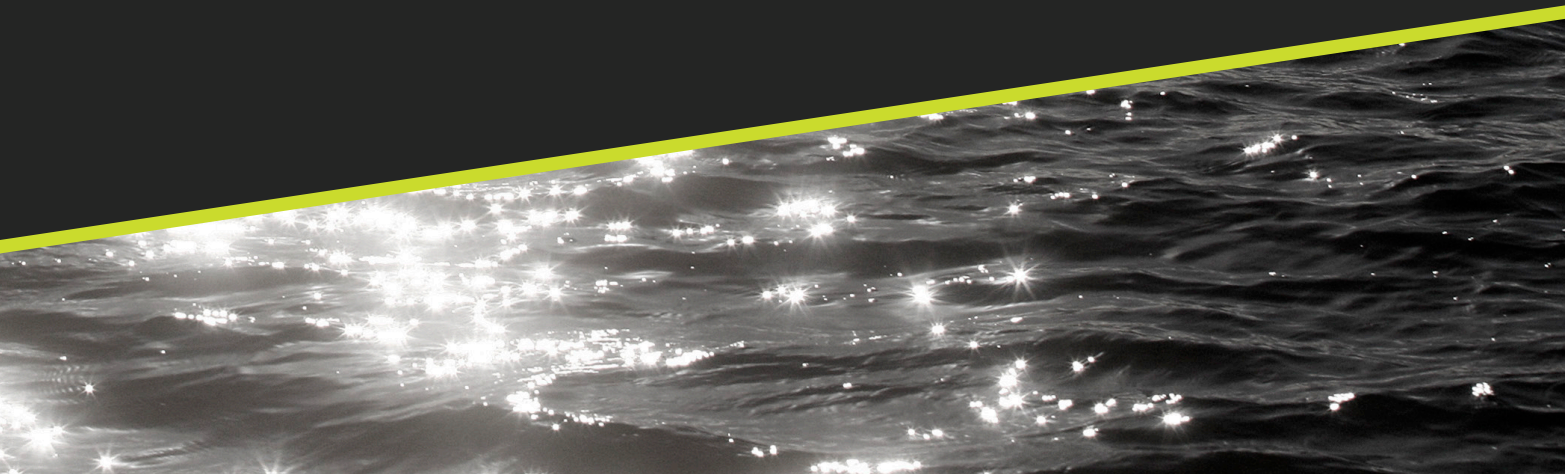


EIVA

Solutions
for a blue planet





Software

Optimising the businesses of offshore
and shallow water professionals
with sustainability as our beacon

The energy, construction and science industries are experiencing a need for solutions that will streamline operations above and below the water's surface.

It is possible to achieve this while reducing environmental and operational risk, and increasing cost- and time-efficiency... which is where EIVA's solutions can be brought on board.

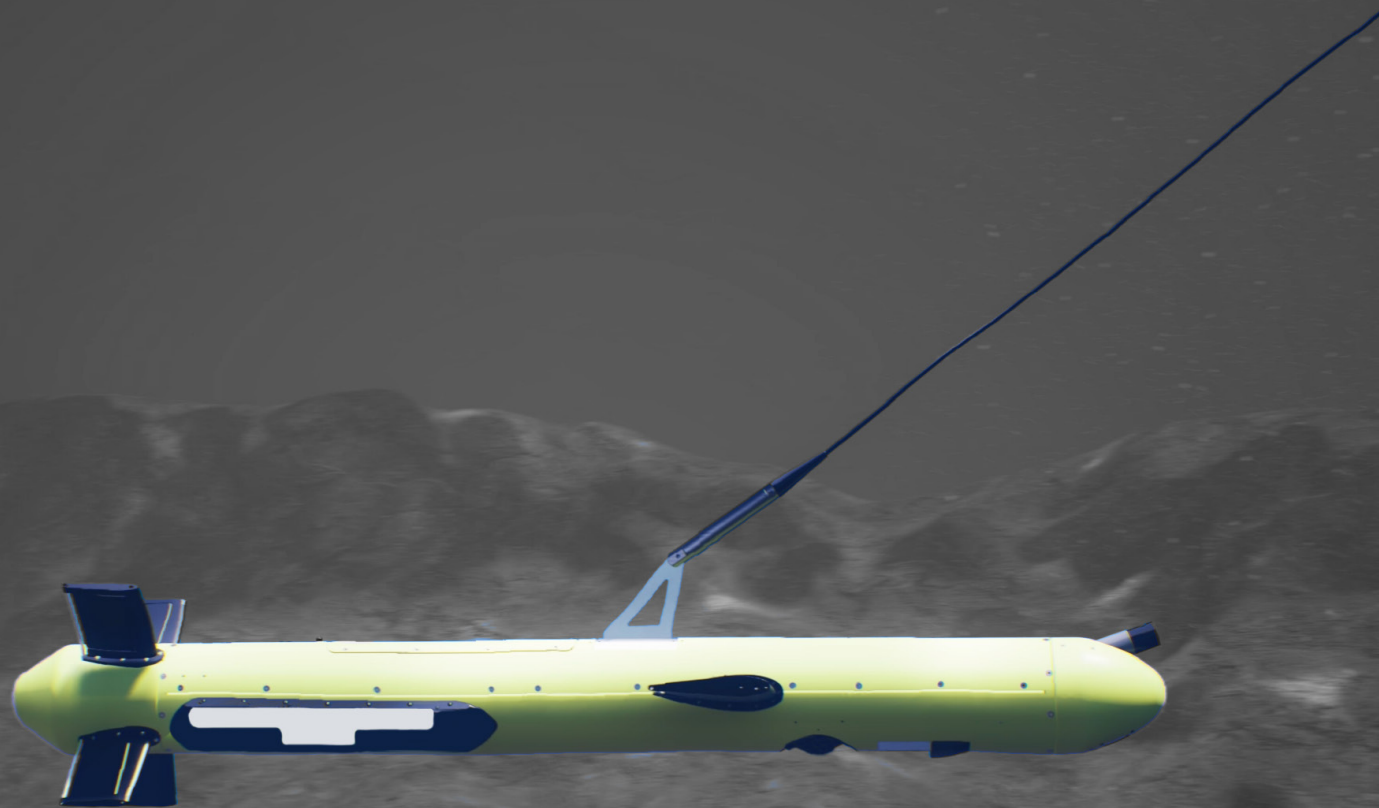
Integrated system solutions
Equipment

Rental

24/7 support

Training





For over-the-horizon, remote and on-site operations with features for automation, autonomy and AI

... we make sure you're fully equipped

EIVA is an international provider of high-end software and hardware solutions.

More than 45 years of expertise in the offshore and shallow water industries.

In-house, experienced staff of software and hardware engineers, surveyors and technicians.

Part of the Covelya Group, which aims to foster synergistic partnerships between the operating companies to exploit technologies, products and knowledge.

EIVA

 Chelsea
Technologies

FORCYS

covelya
GROUP

 WAVEFRONT

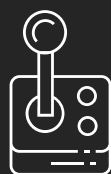
 Sonardyne

VOYIS 



Cable, pipe & asset inspections

Market-leading 3D software for subsea inspections of any type



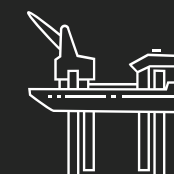
ROV steering

A complete software solution for ROV operations



Cable lay

Software for advanced cable route planning and real-time cable lay operations



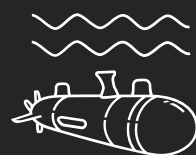
Jack-up operations

Combining software with precise positioning sensors for pin-point jack-up positioning



USV- & vessel-based hydrographic inspections

Software for shallow water, waterway and harbour surveys carried out with manned and unmanned vessels



AUV onboard processing & navigation

Innovative solutions to enhance and expand AUV capabilities



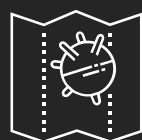
Tow, mooring & riser handling

Market-leading software for rig move positioning and anchor/riser simulation



Oceanography & environmental studies

Multi-purpose ROTV solution covering a wide variety of survey disciplines



UXO surveys

Proven technology for safe, cost-effective UXO surveys



Archeology

Data collection and processing solutions to uncover history on the seafloor



Virtual buoys

Ensure safe waterway navigation with virtual marker buoys



Data buoys

Designed for high-end monitoring, built for long-term operational independence



Automation, autonomy & AI
– all in one software suite

... for over-the-horizon,
remote & on-site operations

NaviSuite

Advanced software solutions
... for a wide variety of subsea tasks.

A complete package – ranging from very high-end to the semi-professional use, with the same software at the core, tailored and bundled for different application types.

Our substantial software team ensures that the software evolves and new capabilities and application types are added to the entire product suite, including small (but important) requests, as well as new capabilities and modules.

One suite with many cost saving benefits

NaviSuite's many features allow our customers to **standardise** with our software, resulting in cost savings on not just licences but also on training and ease of rotation of staff.

Customers can **eliminate** the use of other packages, and thus reduce costs further while at the same time improving the efficiency of their work processes.

Simplification of features and inclusion of **automation, autonomy and AI** save costs through reduced man-hours – including continual improvements focusing on automatic **interpretation** of data through machine learning and deep learning features.

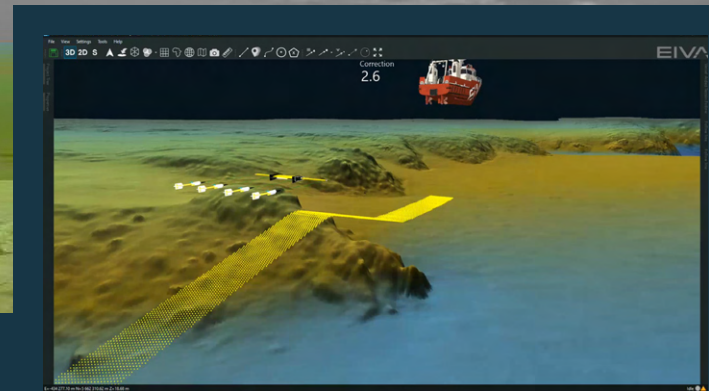
Different licence models for different needs

Available as **daily and annual subscriptions** – or as permanent licences, if preferred.

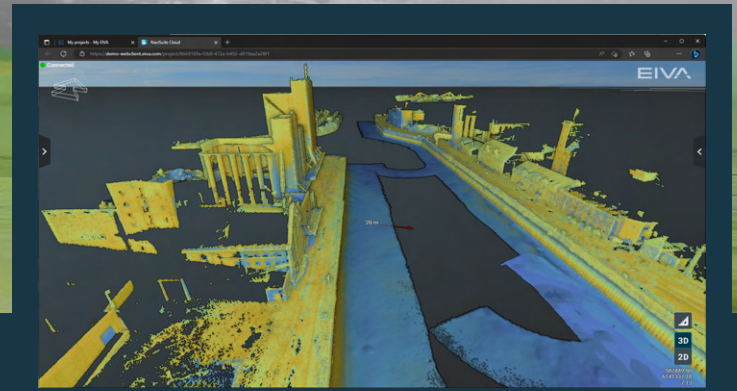
Latest news

Sailing forward with further development ... covering new technologies & advanced features

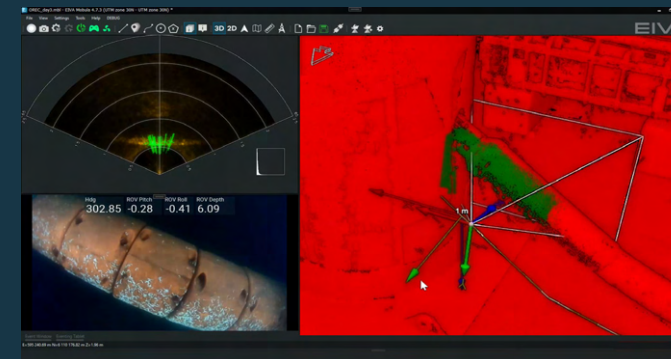
Dive into recent news articles



Vessel-Aided Terrain Follow mode – MBE-assisted ROTV steering mode enabling smoother automated obstacle avoidance



NaviSuite Cloud – Access projects from any browser and any device with a thin client version of NaviSuite – learn more on page 22-23



Voyis VSLAM powered by EIVA NaviSuite – Real-time data quality control during ROV visual inspections with Voyis' Discovery camera – Generate high-quality 3D point clouds and navigation trajectory plots for augmented piloting



NaviSuite Kuda – Autopilot – Integrated hardware and software for autonomous surveys with USV

NaviSuite Nardoa

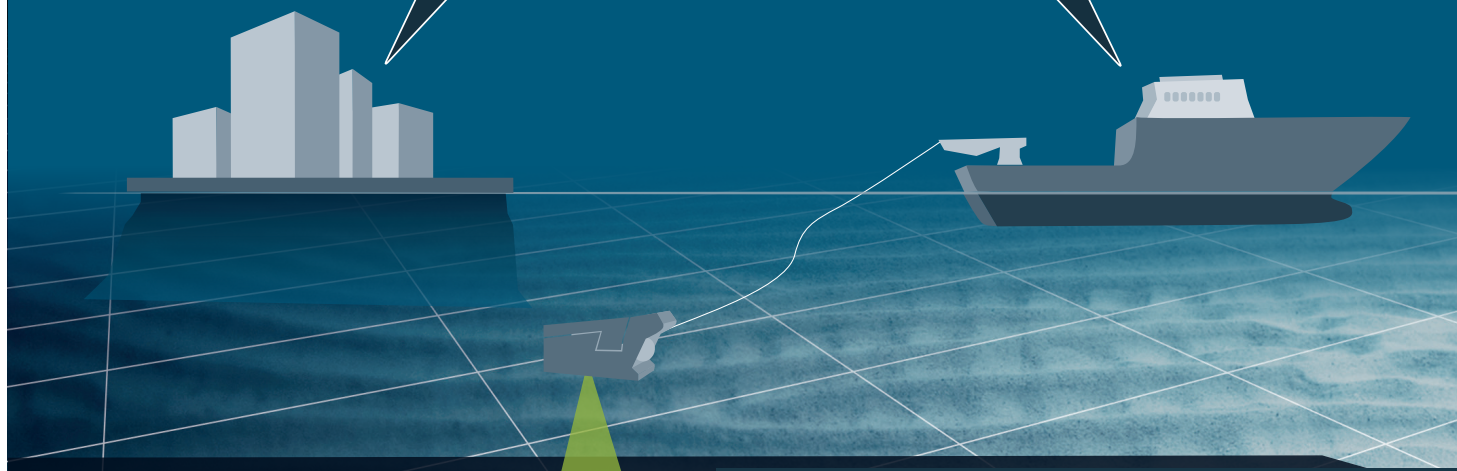
Advanced pipeline & cable route inspection ... with multiple automation tools

Offline surveyors
(On shore)

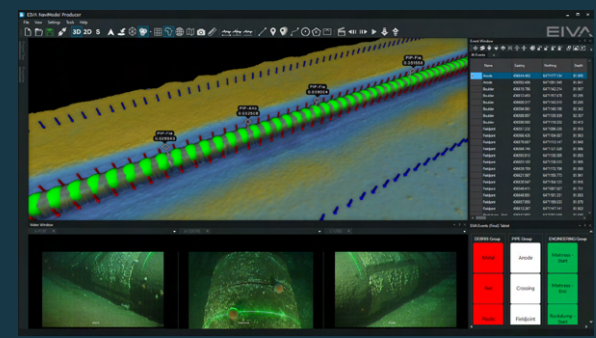
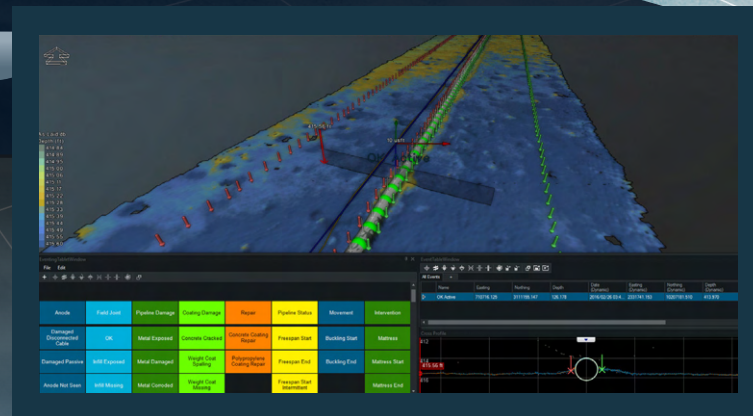


Optional number and location of surveyors working with the data

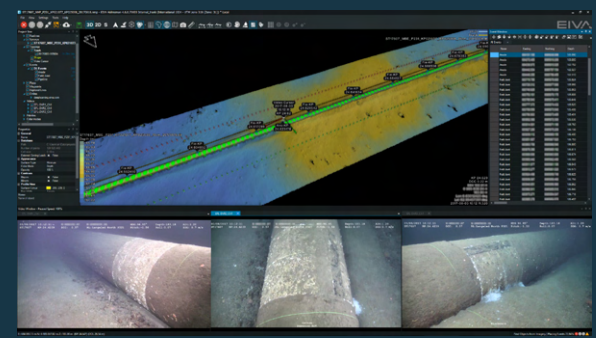
Online surveyors
(On board)



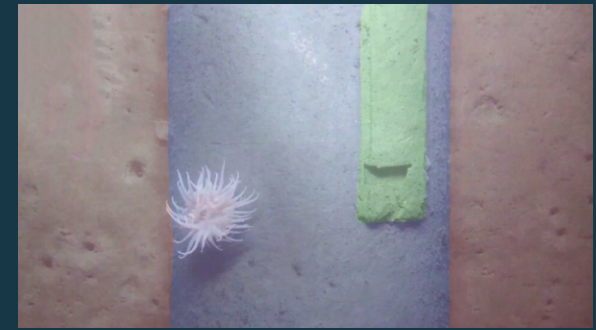
Learn more and dive into pricing



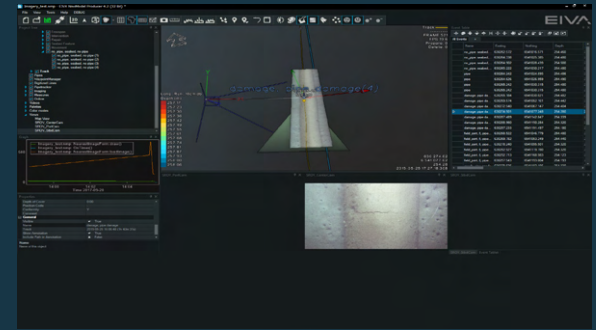
Eventing tool for configurable event registration and synchronised views



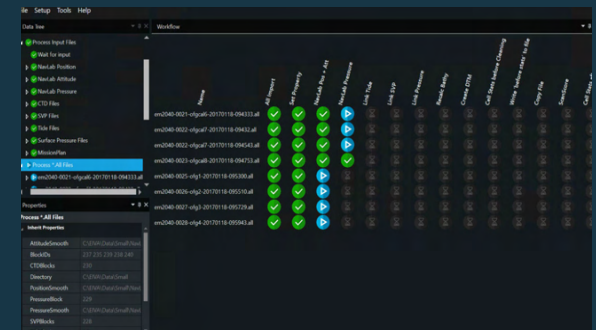
Data fusion allowing for combination of sonar, laser scanner, INS and camera data



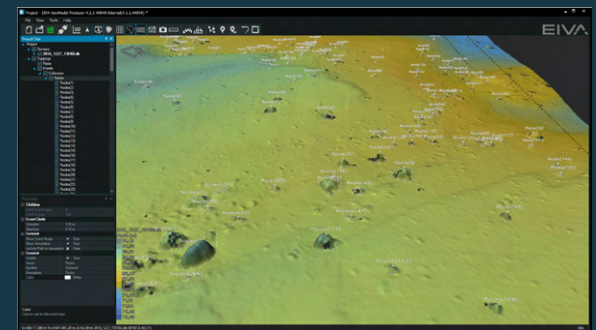
NaviSuite Deep Learning allowing for automatic object and damage detection



NaviSuite Deep Learning allowing for automatic eventing



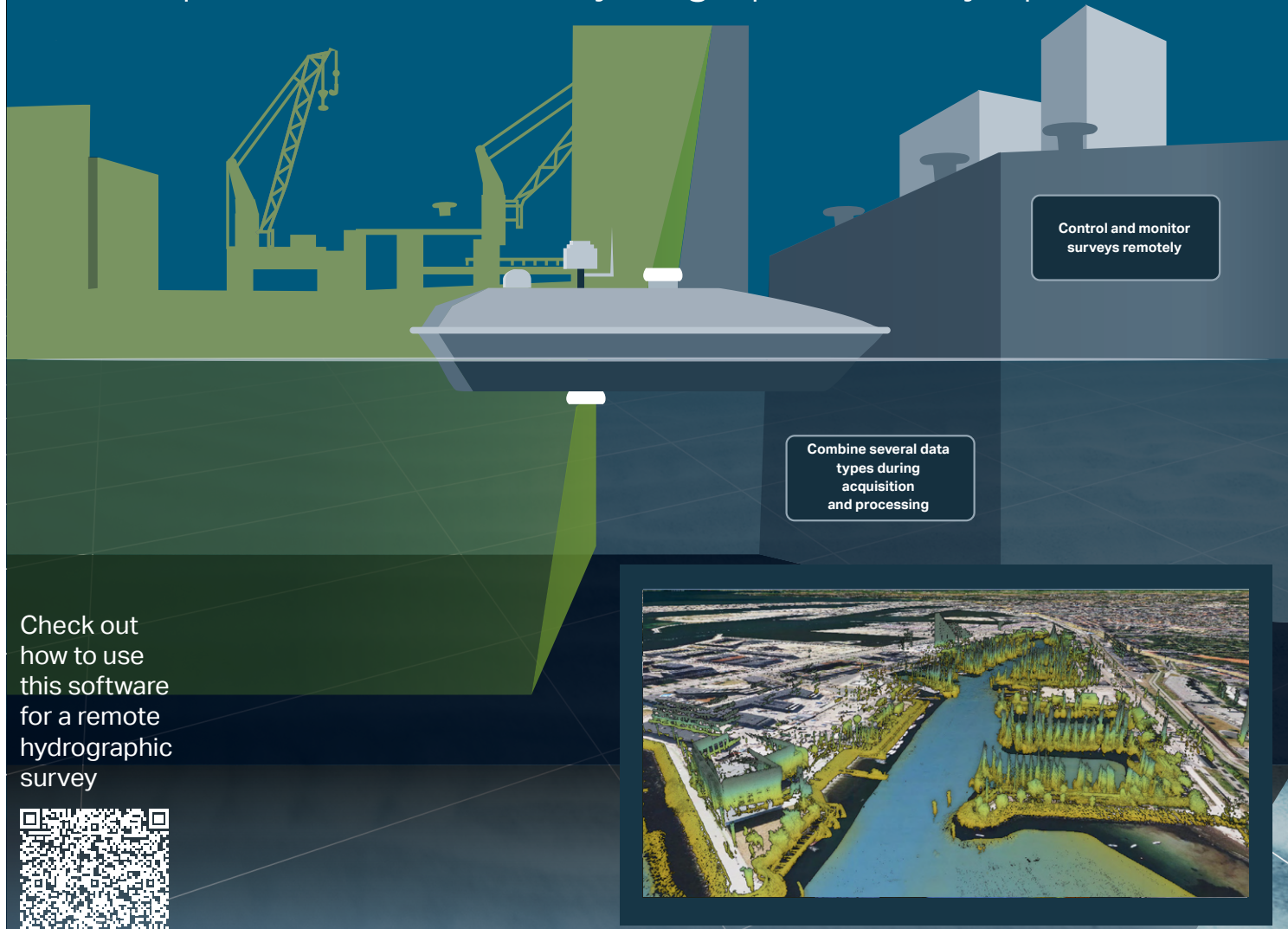
Workflow Manager allowing for automatic data processing



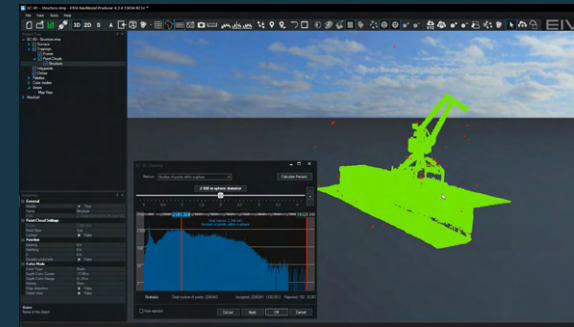
Find Object tool for automatic eventing of objects on the seafloor such as rocks, boulders and mines

NaviSuite Kuda

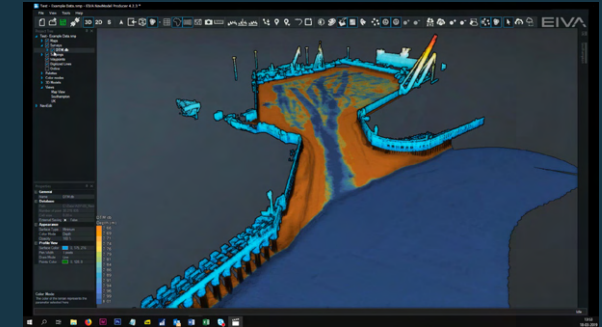
Deep feature list for shallow water surveys
... with variants for USV / single vessel setups as well as complex and extensive hydrographic survey operations



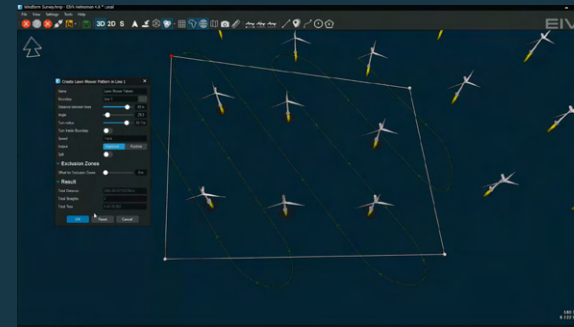
Check out how to use this software for a remote hydrographic survey



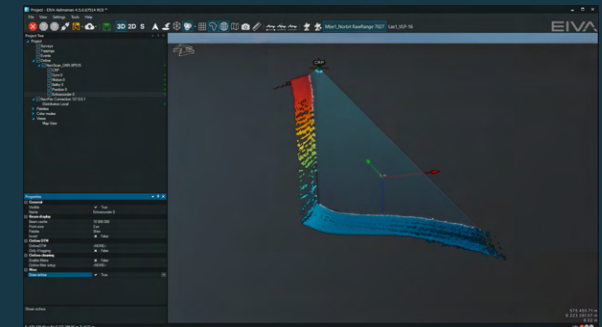
EC-3D cleaning tool supporting several cleaning methods for 2D and 3D data



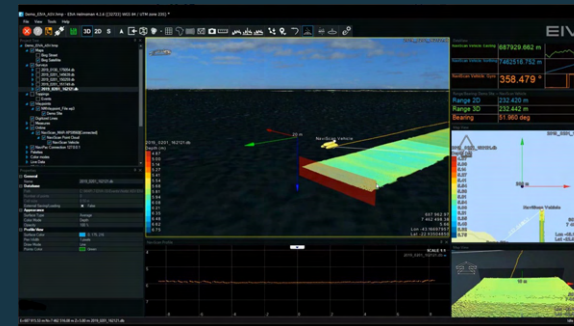
Combine sonar and LiDAR data in a single survey



Advanced runline and navigation features, including automatically generated runline based on actual coverage of the sonar



Data down-sampling allowing for real-time display at remote command centre with standard internet connection



Autopilot for USVs and steering of manned vessels and remote streaming and control



Real-time quality control displays optimise operations

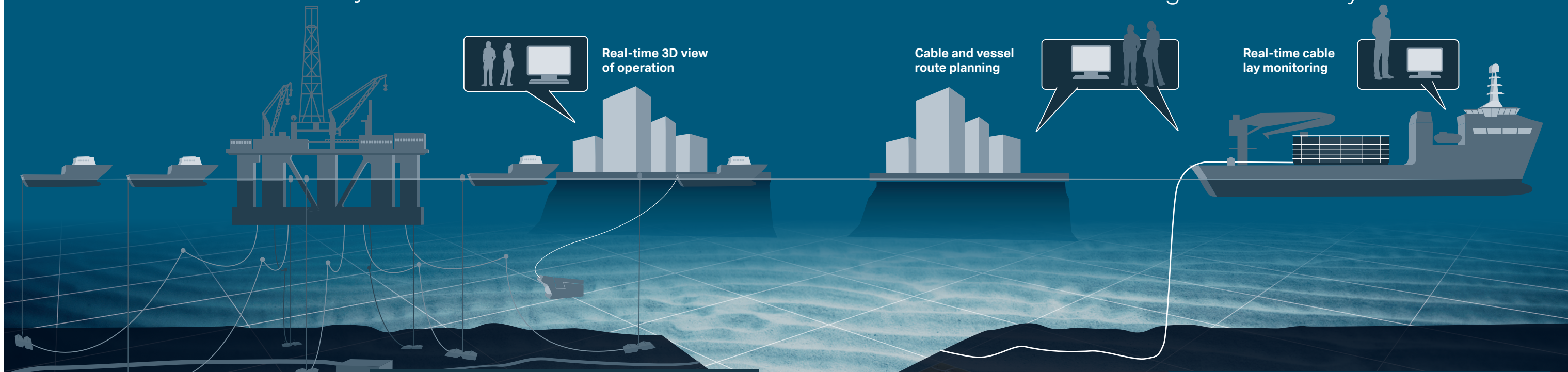
NaviSuite Beka

Efficient anchor handling operations ... with advanced catenary simulation

Dive into the details and pricing

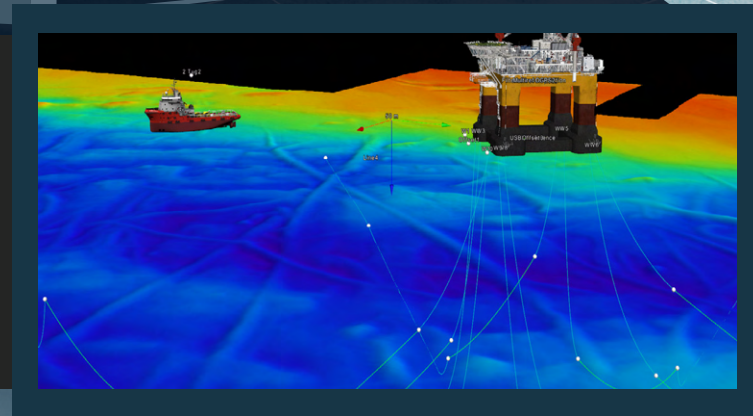


... also for cable route design and cable lay



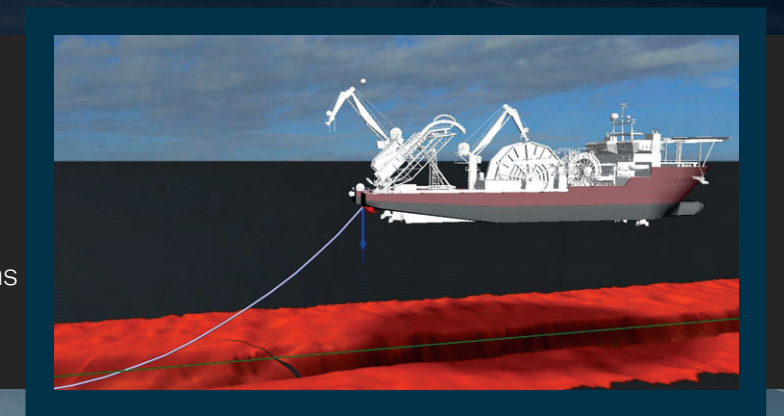
Anchor handling software widely used by companies throughout the world

- Live barge and tug positions
- Planning of anchor patterns
- Live simulation of anchor position / catenary
- Communication between barge and tugs
- Tug control from barge
- Remote monitoring and control from shore



Advanced cable lay functionality

- Cable route design and simulation
- Live 3D display of seabed, ROV, vessels and cable position
- Advanced touchdown, bending and tension estimation based on physics simulation algorithms
- Use LiDAR, sonar and other sensors for touchdown and cable departure angle monitoring



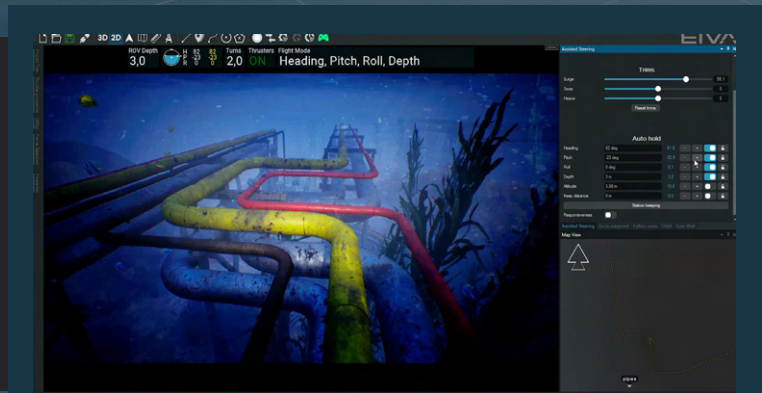
NaviSuite Mobula

Fully integrated ROV inspection package ... with a high degree of automation

Read a case study about NaviSuite Mobula



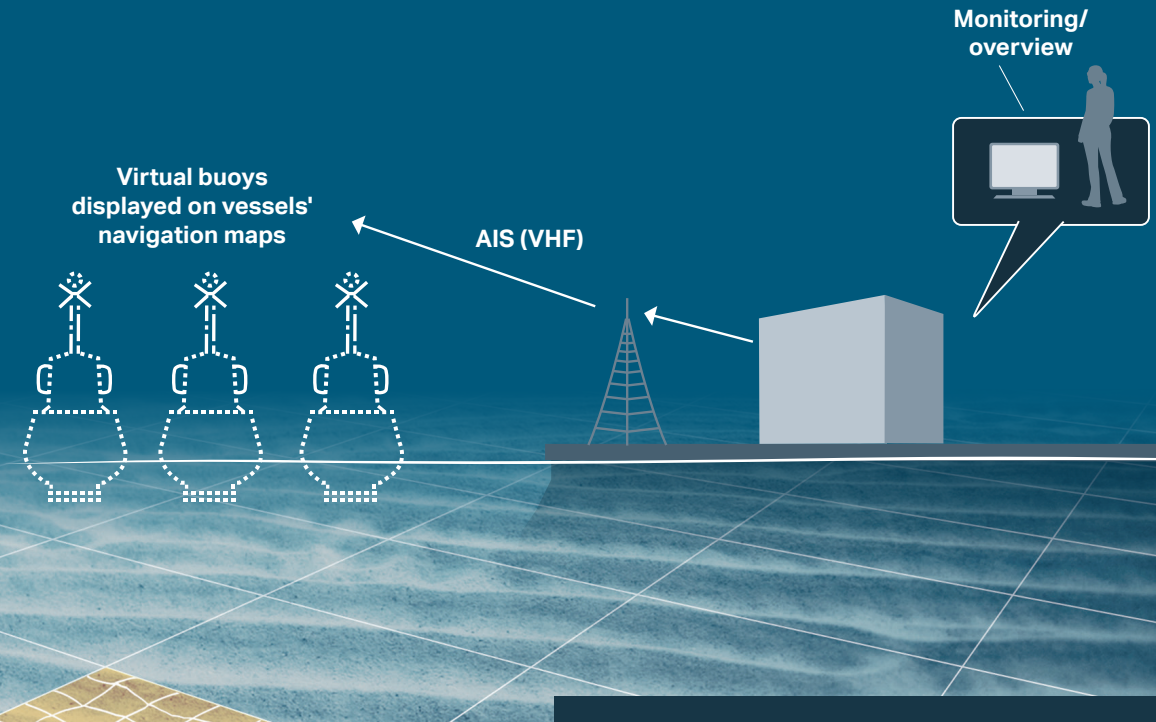
- Manual, assisted and automated steering
- incl scan wall, station keeping and orbit modes
- Sonar/laser scanner data acquisition/processing
- 3D display: data fusion, maps and ROV track
- Video recording and replay
- Easy interfacing and configuration of sensors
- Strong thruster control and support of positioning equipment



NaviSuite Perio

Ensure safe waterway navigation ... with virtual marker buoys

Read a case study about NaviSuite Perio



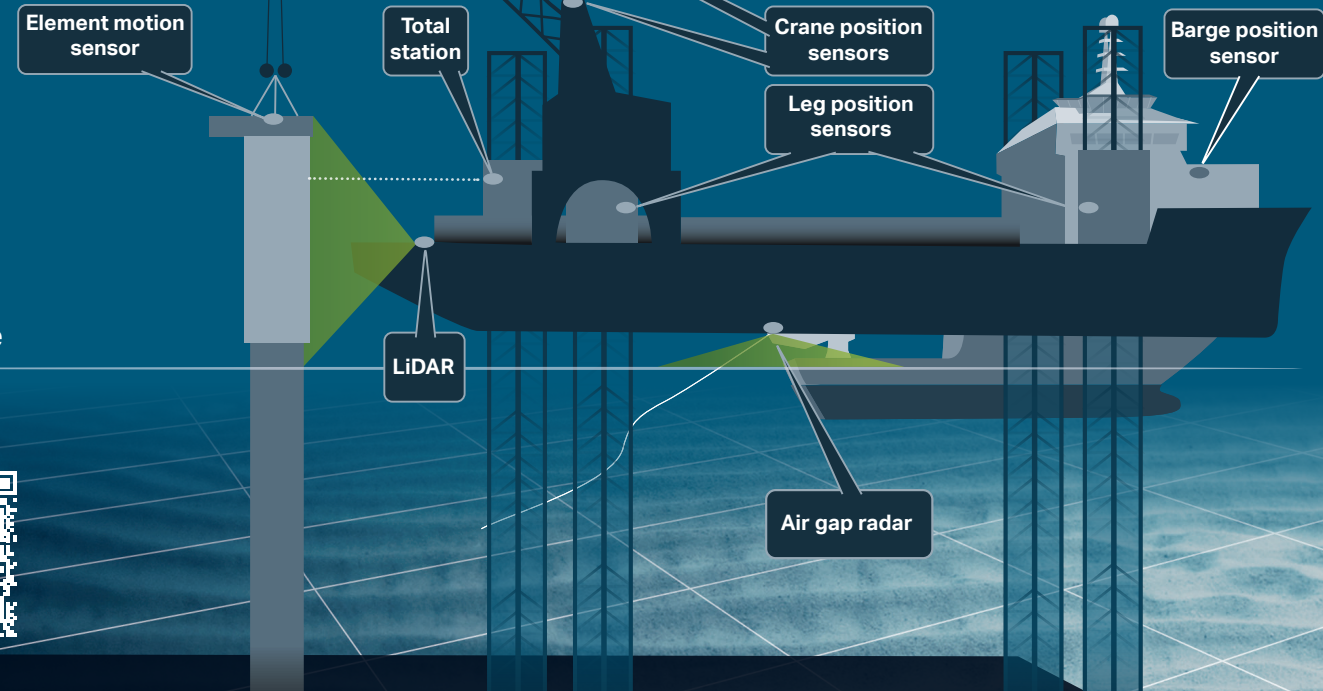
Save money with virtual navigation aids

- 3D visualisation of seabed, navigation maps, etc
- Placement of buoys on exact locations
- Buoys appear on all AIS-enabled vessels nearby
- Built-in quality check
- AIS AtoN standard
- Up to 250 buoys from a single transmitter



NaviSuite Pelta

High-precision construction operations
... available with all relevant sensors

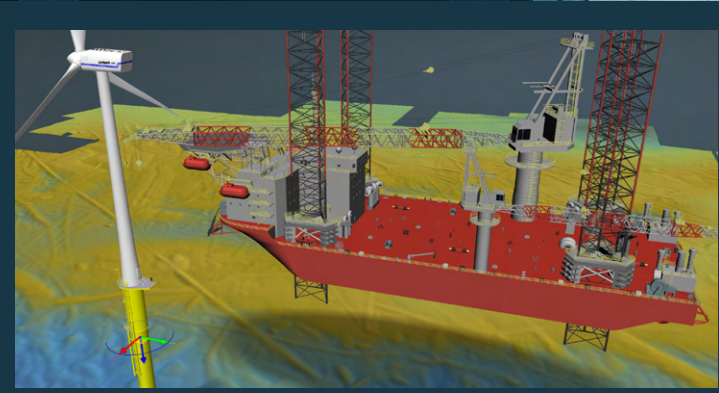


Learn more
about
NaviSuite
Pelta



NaviSuite has been involved in the setup of most offshore wind farms worldwide and is installed on most of the large jack-up vessels in operation

- Vessel positioning and jack-up monitoring
- Crane and element positioning
- Measurement of verticality, height, etc
- Integration of video, sonar, LiDAR and other sensors



ATTU

Accurate time tagging
... for improved survey results

Learn more
about EIVA's
ATTU

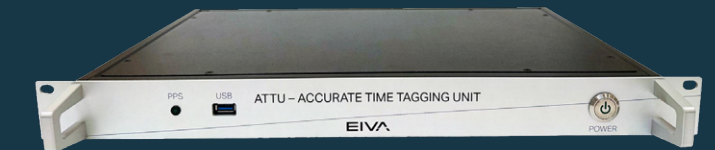


The ATTU can be applied in any survey set-up that includes EIVA's navigation and data acquisition software solutions, such as NaviSuite Kuda or NaviPac and NaviScan.

ATTU ensures a time-tagging accuracy that is better than 50 μ Sec.

Knowing the when and where of your sensor data is an essential element when you want optimum accuracy and high-quality data of your survey operations.

This rack-mounted unit enables plug'n'play installation into existing solutions.

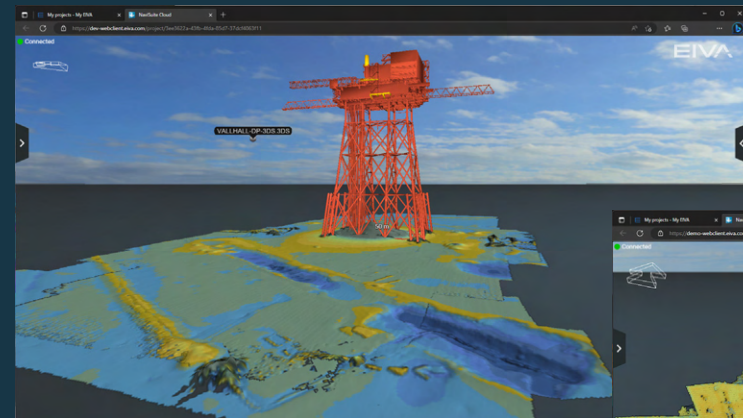


NaviSuite Cloud

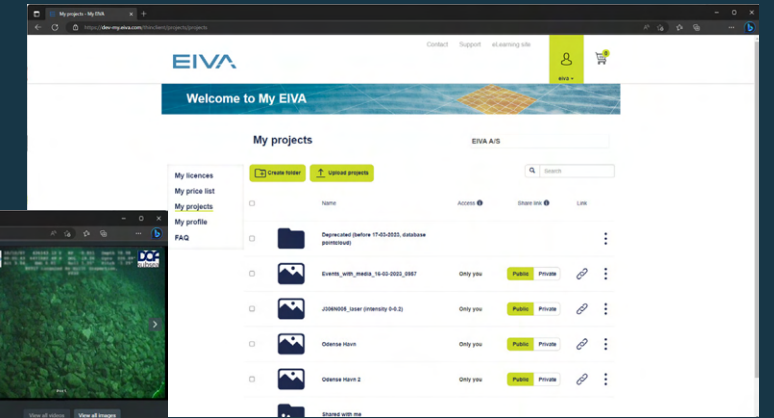
Information sharing made easy ... with a cloud-based NaviSuite thin-client

... access your projects to edit and process data – from a web browser on any device

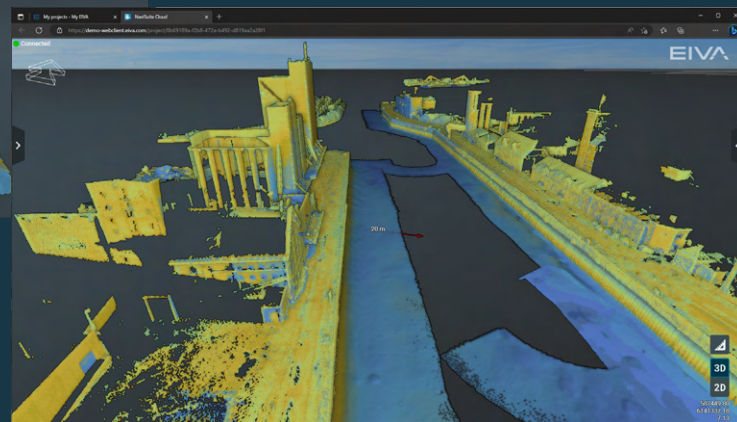
Simple and fast survey information sharing – no need for special software installed



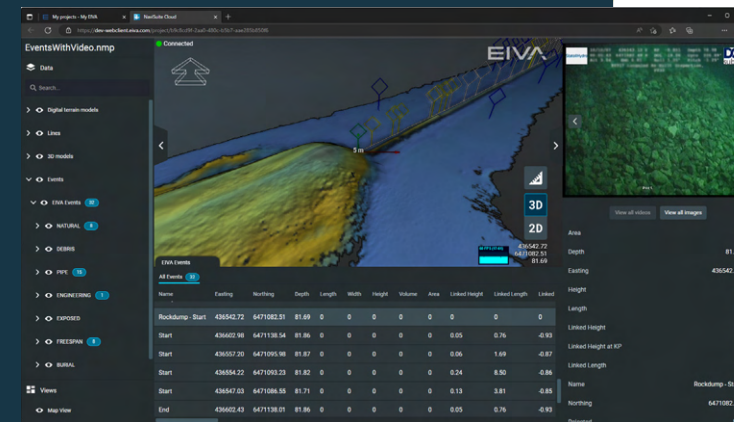
Manage projects and share them in public or private URLs – in the My EIVA web portal



See a video
of this
thin-client in
action



High performance rendering of 3D models – as powerful as in NaviSuite desktop software



Register observations with NaviSuite's eventing functionality. View events marked in the 3D scene and see annotations, image, and nearest point in video playback.

Find our solutions in our webshop



Integrate our software and hardware solutions with...

Extensive equipment portfolio ... riding the newest waves of technology

Innovative solutions based on an R&D process with high customer involvement

Single pieces of equipment or complete system solutions installed and commissioned on site

Standard products or one-off tailored solutions offering a perfect match for your needs

Subsea lasers

Cameras

ROVs

IMUs / INSs / gyros

Multi-beam echo sounders

Visual / acoustic tracking systems

AUV

GNSSs / GPSs

Acoustic modems

Sidescan sonars

USBL / LBL

Sub-bottom profiler

ADCPs / DVLs

USVs

Acoustic releases

Magnetometers **LiDARs**

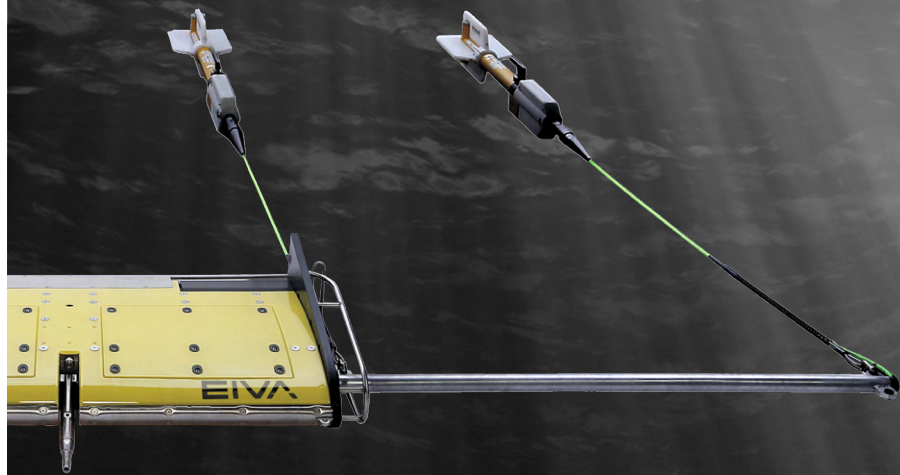
SVP / CTD sensors

... to mention but a few

ScanFish

Affordable & flexible ROTV range

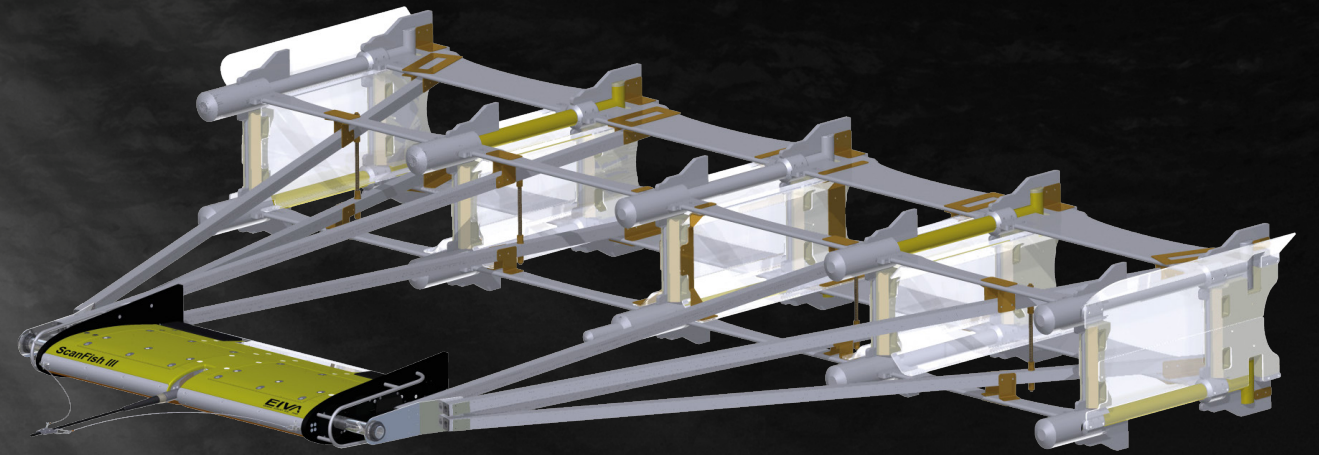
... with the possibility of tailored solutions



Control the position of your sensors in the water column

Terrain-following and full water-column operation modes

3D steering option for control of the ROTV's horizontal movements



ScanFish Katria

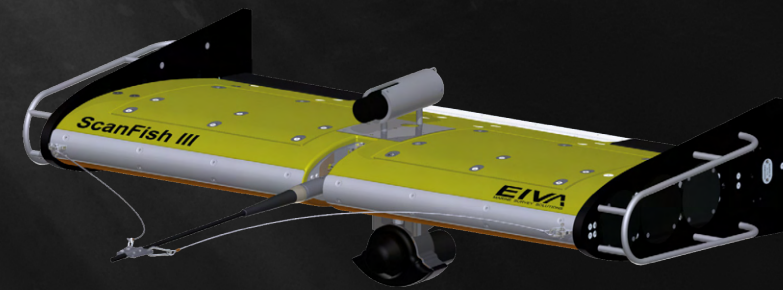
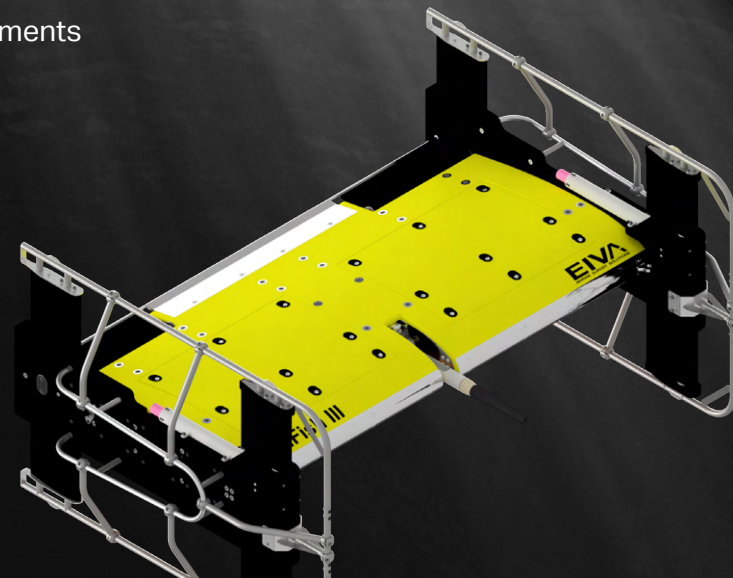
Intelligent wide-sweep ROTV for magnetometer surveys

ScanFish Rocio

Multi-purpose ROTV for oceanographic surveys

ScanFish L & XL

Larger ROTVs allowing for payload of up to 400 kg



See this solution in action



ScanFish Equinox

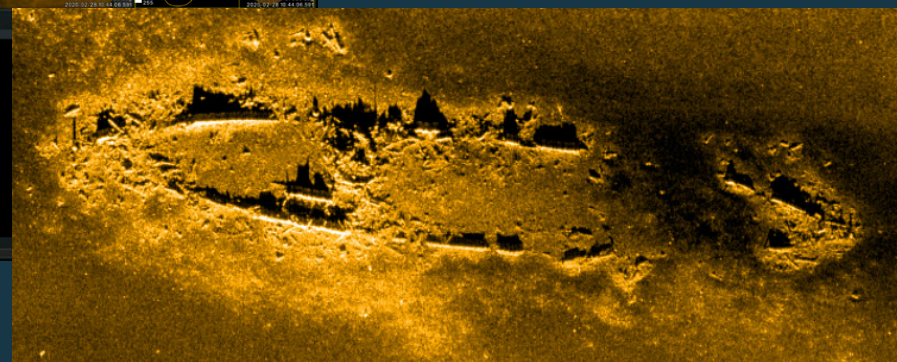
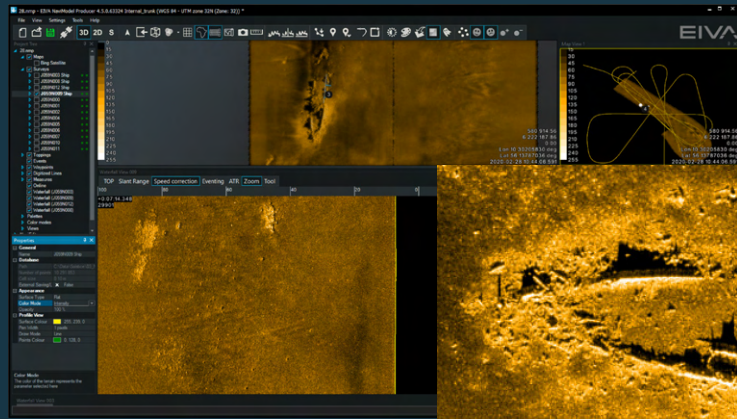
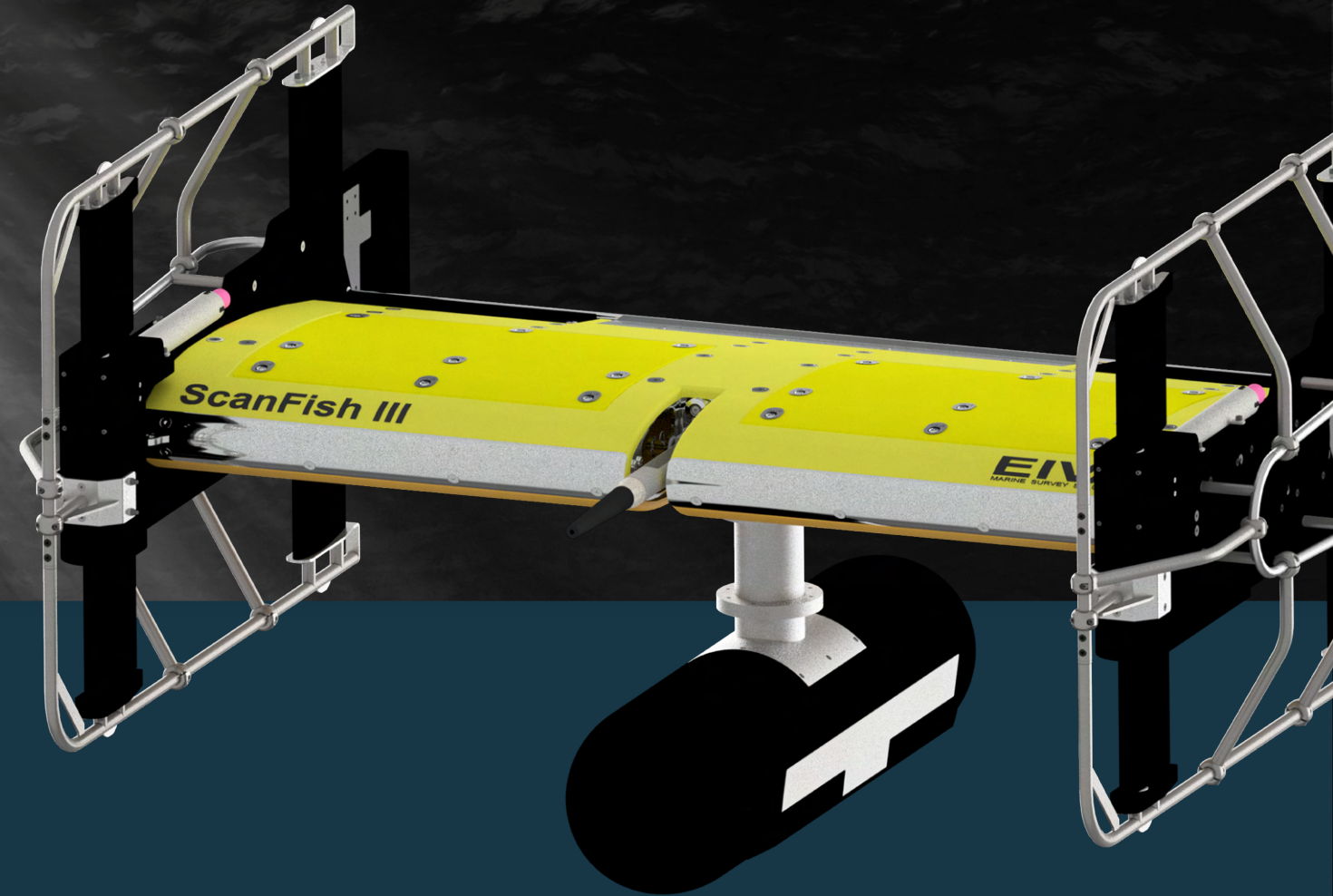
Intelligent, towed multi-aperture sidescan sonar solution

Achieves improved area coverage rates for UXO (unexploded ordnance) surveys, MCM (mine-countermeasures) and hydrographic operations, such as site surveys pre-installation of renewable energy sites

Provides unrivalled stability, position accuracy and results in real-time

Solstice multiple aperture sonar delivering imagery of the highest quality possible from sidescan sonars

Includes software for AI-based detection and classification of seafloor objects across the whole swath



Read a case study about Equinox



ViperFish

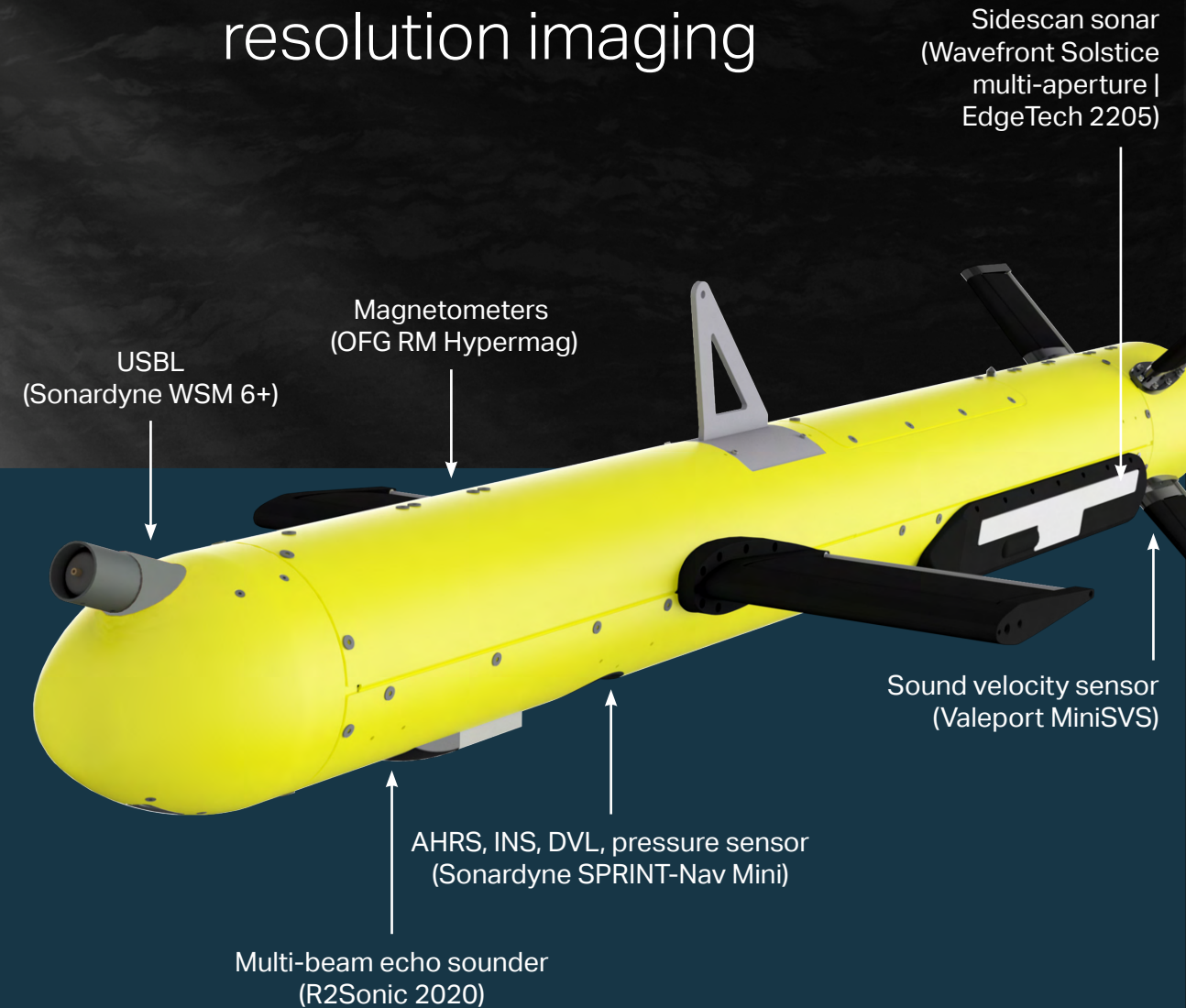
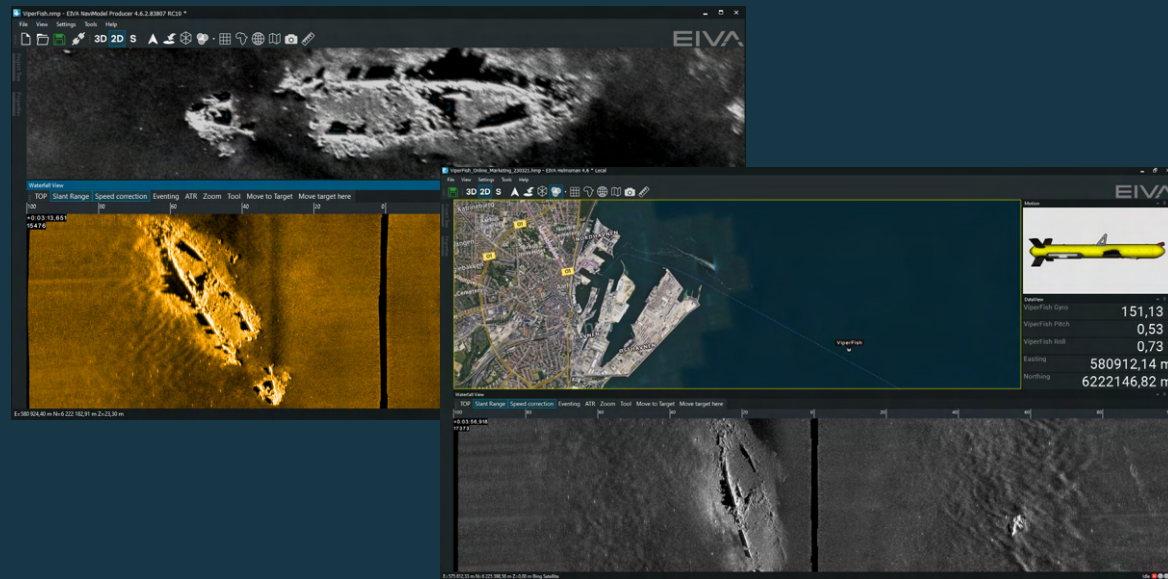
3D steerable survey solution for towing by USVs and small vessels

Ideal ROTV solution for autonomous UXO surveys, MCM, pipeline inspection, wreckage surveys and more

Safely scan hard to reach areas with sensors at a fixed height, close to the seabed

Dedicated winch interfaces to NaviSuite Flight software enabling autonomous deployment and recovery

Precise positioning and high-resolution imaging



See what ViperFish can do





ToughBoy Panchax

Wave buoy with lowest possible total cost of ownership ... cutting costs without compromising data quality

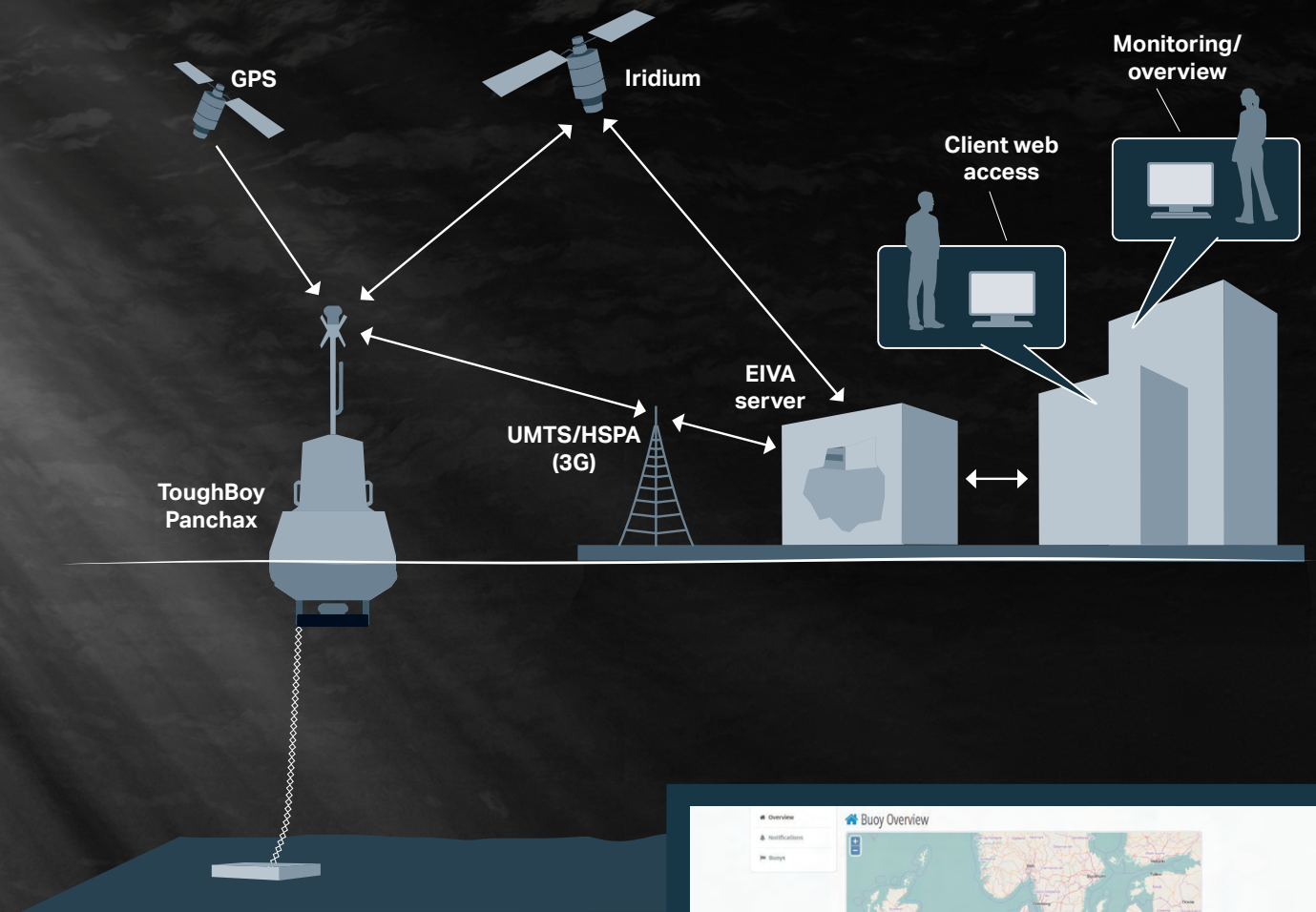
Competitive purchase price together with with low cost of service and communications

State-of-the-art, integrated ADCP and thoroughly-tested, advanced wave sensor

From harbour monitoring and subsea engineering pre-surveys to wave energy studies and any type of wave and current measurement surveys in between

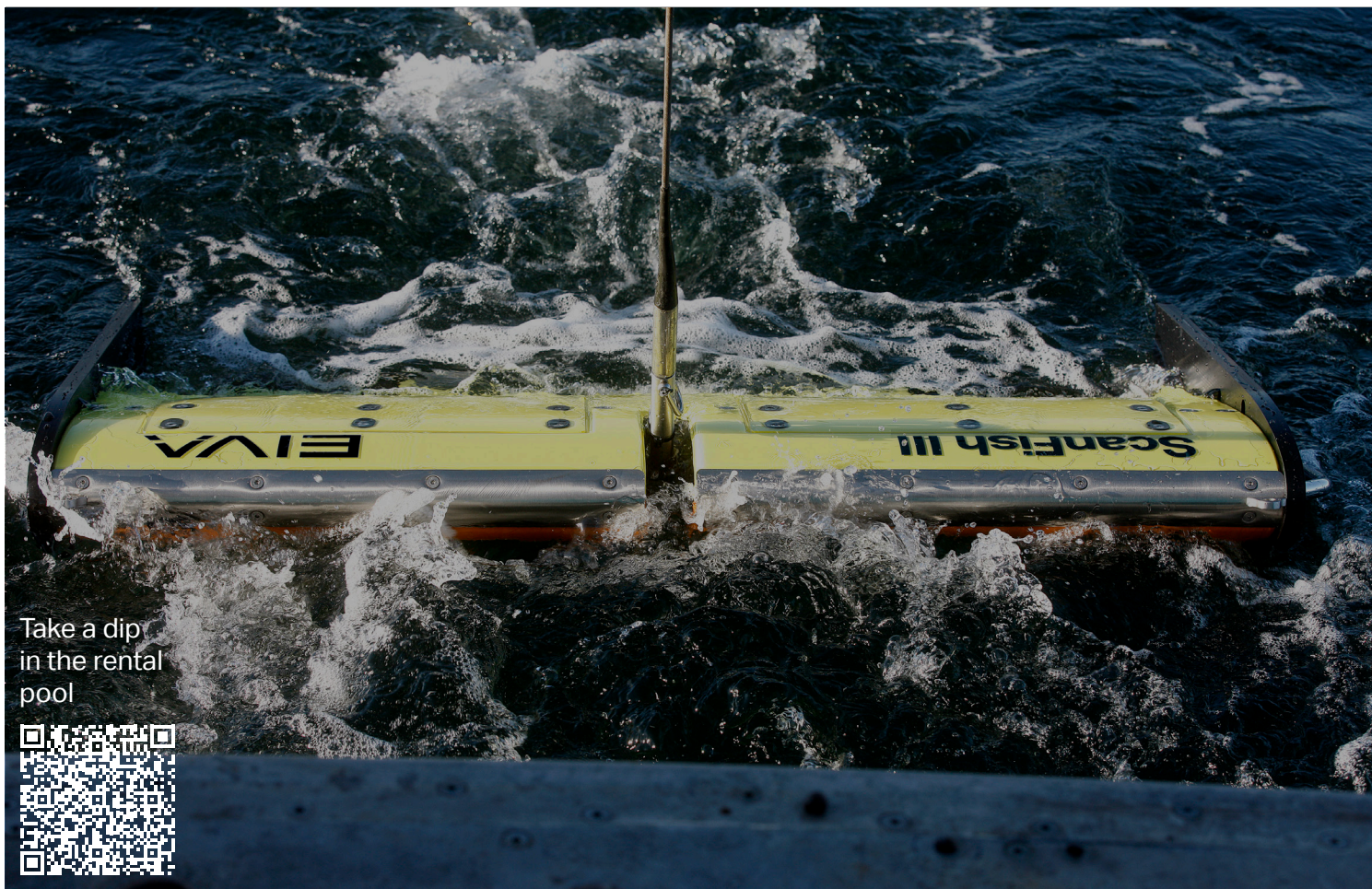


Watch how easy it is to deploy



Buoy Overview

Buoy	Main	Backup	Wind speed	Direction	Height	Direction	Latest Packet	Interval	Current
	Status	PS	(m/s)	(Deg)	(m)	(Deg)			
100010012	OK	12.31	11.31	0.4	204.2	0	350-16	2 minutes	Uptime: Lat: 56.10008 Lon: 10.00000
100010013	OK	12.3	11.75	8.4	133.38	0.78	71.02	7 minutes	Uptime: Lat: 54.40002 Lon: 7.87265
100010014	OK	12.19	11.43	0	0.52	18.28	2 minutes	Uptime: Lat: 53.24004 Lon: 6.30488	



Take a dip
in the rental
pool



Renting ... could be your most profitable buy

Try before you buy

Long list of solutions to choose from, covering software, hardware and system solutions – basically everything you see in this brochure, including technical assistance

We do not rest until you've set sail with the optimal solution



Check out
our support
offerings

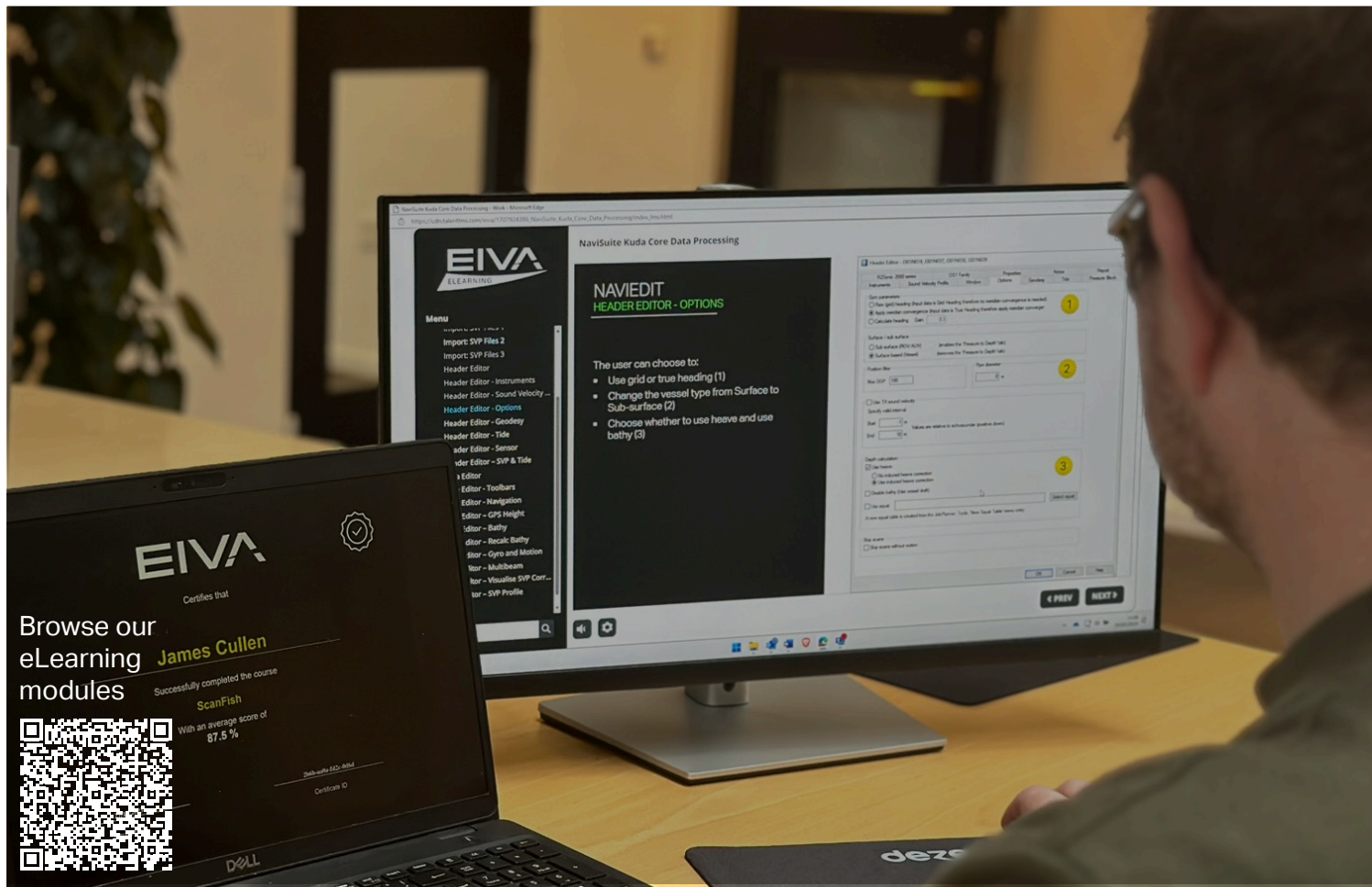


We're ready to help 24/7 ... if the wind is taken out of your sails

24/7 hardware and software support, all year round, by a dedicated team operating from Europe and Asia.

Qualified team of surveyors, technicians and engineers who know the drill

On- or off-site assistance for mobilisation and as part of a project, depending on your needs



Teaching you the software ropes with eLearning

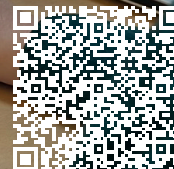
- Upgrade your skills whenever and wherever you want through an annual subscription
- Track and document learning progress and achievements
- Get your crew on board at a reduced price via a corporate account



... and training courses

- Supplement eLearning with training courses covering advanced features and exercises
- Standardised and tailored courses as classroom training throughout the world – including at your premises – or virtual training
- Experienced instructors and international network of strategic training partners

Upcoming training courses









- EIVA offices
- EIVA representatives
- EIVA local support

Headquartered in Denmark
Founded in 1978
Fully owned subsidiary of Covelya Group
In-house R&D department and training course facilities
Financially strong
ISO 9001-certified

Want to further explore the EIVA sea?

 eiva.com
 eiva@eiva.com
 +45 8628 2011

 [company/eiva-HQ](https://www.linkedin.com/company/eiva-HQ)
 [eivaHQ](https://www.youtube.com/eivaHQ)
 [eivaHQ](https://www.facebook.com/eivaHQ)
 [eiva_HQ](https://www.instagram.com/eiva_HQ)

EIVA